

# PARTNER FOR PREMIUM REWORK ENGINEERING DRILLING SOLUTIONS





# Company profile

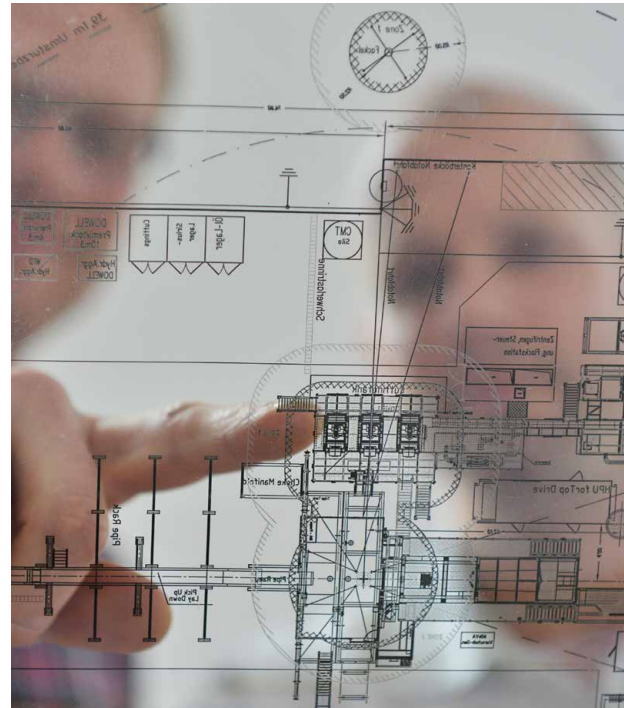
## A partner you can count on

RED Drilling & Services GmbH (former RAG Energy Drilling GmbH) was established in 2014 as a 100% subsidiary of a long-established Austrian exploration, production and gas storage company with over 80 years of experience. The core business is the planning, implementation and maintenance of oil and gas exploration and production wells, gas storage and geothermal wells, as well as the plug and abandonment of old wells. Our portfolio also includes subsurface and surface engineering services.

Since July 2019, UOS Drilling S.A. is the 100% owner of RED Drilling & Services GmbH (RED) and strengthens the basis for international projects.

Our goal is to implement safe, efficient, environmentally friendly projects for our clients, and to offer end-to-end solutions. We aim to maintain excellent technical and financial performances, and to drive innovation safeguarding our long-term competitiveness.

Professional project preparation, timely and transparent communication with authorities and public interest bodies, as well as close working relationships with contractors and service companies all contribute to our success and that of our customers.



### RED offers:

- highly qualified and motivated staff
- modern, high-efficiency drilling and workover rigs
- optimally equipped slickline and wireline trucks
- comprehensive specialized equipment

This enables RED to deliver oil, gas, storage and geothermal projects – including:

- rough / conceptual planning
- detailed planning
- turnkey implementation of wells as EPC contractor
- support services during the operational phase

In addition to construction, our services include:

- recompletion
- plug and abandonment of wells and surface installations
- Re-establishment of rig sites and wells
- documentation



## Partner for Premium Rework, Engineering & Drilling Solutions

stands for:

- top quality
- state-of-the-art technology
- end-to-end project management
- customized solutions
- adherence to budgets and schedules
- the highest quality, safety and environmental standards
- over 80 years' experience as an operator and service provider.

To ensure the highest standards of workplace safety, environmental protection and quality, RED's integrated management system is certified in accordance with the requirements of international standards – ISO 45001:2018 (safety), ISO 14001:2015 (environment) and ISO 9001:2015 (quality).

Additionally, RED's SCC\*\*2011 certification guarantees that work is carried out in line with the highest safety standards and in compliance with all applicable employee protection regulations.

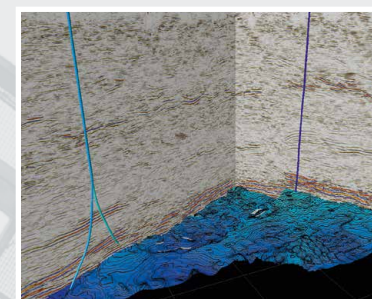






## P&A and revegetation of original condition

- Well abandonment
- Plug and abandonment of stations and pipelines
- Evaluation of possible reuse of installations
- Re-establishment to greenfield status



## Subsurface appraisal — geological services

- Subsurface evaluation and interpretation
- Assessment of geothermal potential
- Reservoir engineering
- Feasibility studies



## Services during operational phase

- Workover operations
- Slickline and wireline services
- Cased hole logging
- Long-term well measurements
- Well testing



## Project planning

- Subsurface and surface project management
- Planning rig site construction
- Well and facility planning
- Production planning
- Cost estimates and project scheduling



## Commissioning and handover

- Test runs and performance testing
- Testing documentation
- Commissioning, acceptance and handover
- Commissioning management
- Training for operational staff

# ALL IN ONE

Over 80 years' experience



## Surface location scouting

- Support for environmental impact assessments
- Infrastructure evaluation
- Review of legal regulations
- Determination of rig site location



## Surface installations and construction management

- Infrastructure planning
- Design and implementation of surface installations and pipelines
- Efficient and customized installation layout
- Construction supervision and monitoring
- Support services



## Permitting / Authority Coordination

- Document preparation
- Obtaining expert reports
- Document submission
- Continuous contact and coordination with authorities
- Support in negotiations with authorities



## Drilling, testing and completion

- Drilling operation
- Highly experienced and motivated rig crews
- Production test, incl. evaluation
- Supervision/monitoring
- Planning and execution of completion works and initial start of production



## Rig site preparation

- Rig site construction
- Coordination of service companies
- Fulfilment of permitting requirements
- On-site construction supervision
- Drilling preparation





# Drilling services

With over 80 years' experience and more than 1,200 wells drilled — with a total length of around 2,000,000 metres — RED has a wealth of expertise when it comes to executing drilling projects.

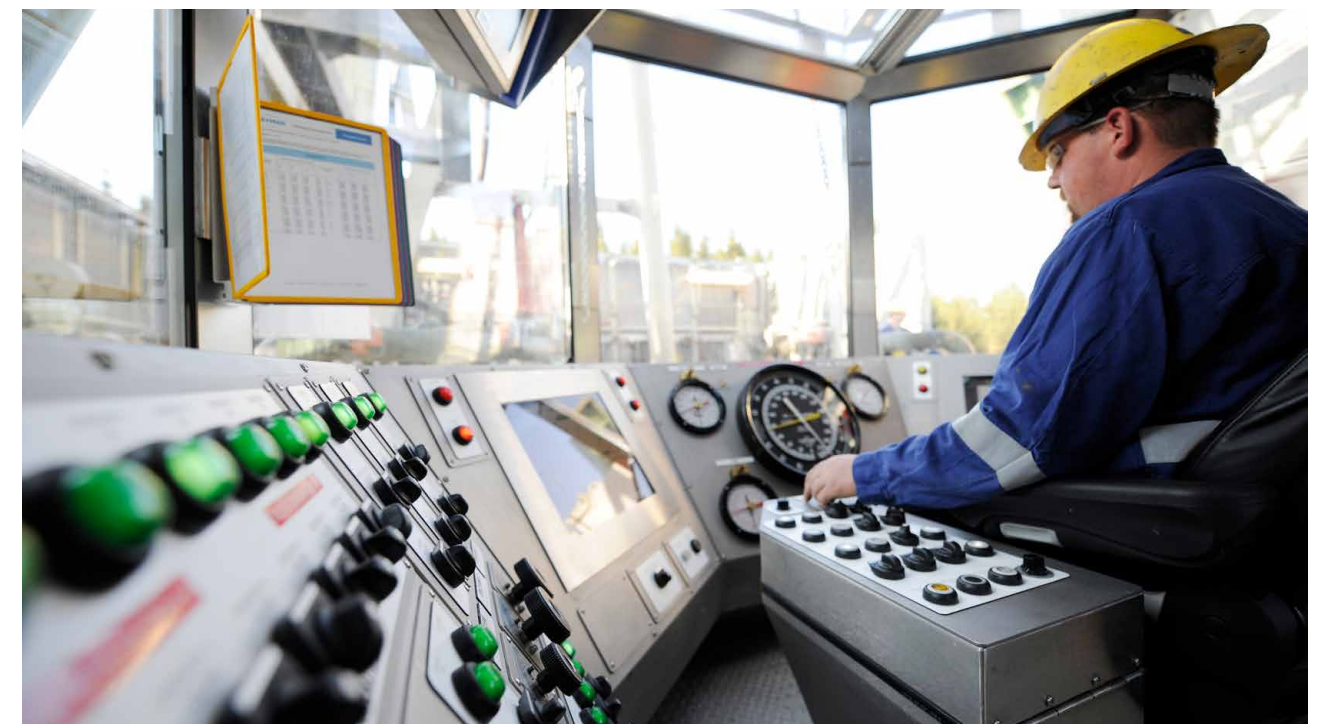
From conventional oil and gas wells, to storage wells, geothermal wells and highly complex extended and multilateral wells. The extensive and high quality services we offer are the product of decades of continuous improvement, training and operational experience of our drilling crews and engineers.

RED Drilling & Services is best in class in Europe in terms of key performance indicators for deep drilling projects (rate of penetration, tripping speeds, BHA handling, contractor-caused downtime, HSE performance).

Modern drilling projects are constantly pushing existing technical limits. High-precision 3D seismic, high-tech materials, new drilling techniques, and operational experience are all crucial to drilling successful wells.

Our in-house maintenance team, our large inventory of spare parts and the computer-controlled monitoring of our rigs play a major part in our success and our customers' satisfaction.

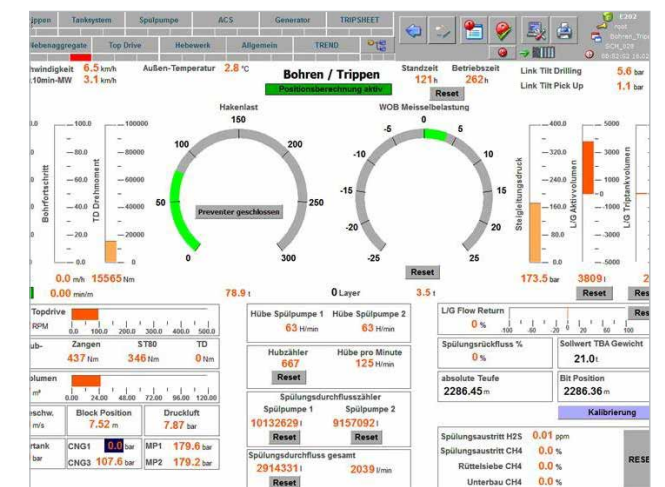
Outstanding environmental and safety performance, due to the option to power the rig by natural gas (CNG or LNG) or using power from the grid instead of diesel engines – and other innovations show that RED Drilling & Services meets the highest standards.



Driller's cabin



Mobile noise protection walls



Modern process control system

## Key advantages

- Highly skilled and motivated, 100% in-house rig crew
- Integrated services (e.g. solids control, gas chromatography)
- Process control system for integrating data into external systems
- Large spare parts inventory
- Specialized maintenance team
- Preventive maintenance system
- Wide portfolio of drilling rigs within the company
- Mobile noise protection walls (heights of 5.9m and 10.9m)
- Extremely fast moves
- Remote-controlled monitoring of rigs
- Decades of experience (average of 16 wells drilled per year)



# Workover and Rework

**With many years of experience, our Workover & Rework Team meets the challenges of existing wells and thus offers you cost-effective and sustainable solutions.**

As the lifetime of oil, gas or geothermal wells increases, in particular maintenance or remedial treatments are required. The aim of these measures is to maintain, enhance or restore previous production potential.

With the beginning of the first field explorations in the environment of today's RED Drilling & Services, workover is part of our daily business including clean-outs of flow restricting deposits, replacement of well-head components, complete production recompletion or individual replacement of downhole components such as pumps and packers due to excessive wear, corrosion or damage. We complete your wells with our focus on optimized operational efficiency.

RED Drilling & Services takes care of all work throughout the entire life cycle of your wells including plug and abandonment operations. In the last few decades, more than 800 wells have been plugged and abandoned safely in accordance with legal requirements. In the process, an abandoned well site can be sustainably converted for subsequent use through targeted material recycling.

The team comprises of RED's own qualified, in-house workover operators, shift leaders and supervisors. RED is an All-In-One service provider, specialized in coordination and execution of customer projects.

## Key advantages

- Comprehensive workover services (completion installation, re-completion, well intervention)
- Plug and abandonment of wells
- Remediation of drilling and well sites, stations, pipelines and sludge pits in oil, gas and water production areas
- Recycling and upcycling of used equipment and installation components
- Qualified personnel
- Dedicated maintenance team
- Preventive maintenance program
- Large spare parts inventory



One stop decommissioning – from existing well to greenfield

Workover rig W101







# Well Service

**Our Well Service Team delivers valuable information on well productivity and integrity.**

RED Well Service offers customers a large selection of equipment to implement your project according to your specifications, on budget and on time, while complying with the highest safety and environmental standards.

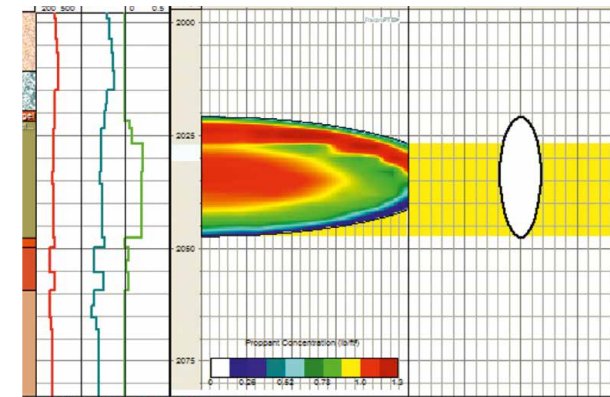
RED's fleet includes one wireline and one slickline truck, as well as one combination truck for simultaneous operations.

Work is carried out by our own qualified staff, who have years of experience in well services. The quality of our employees is ensured by regular training and further education.

With the company's own surface testing equipment, open-hole tests are carried out on many wells in order to check the profitability of drilling projects and to obtain information about the size of gas, oil and water reserves.



## Services



### Design & Engineering

- Design and planning for well integrity
- Design and QC service for well stimulation
- Downhole data acquisition and interpretation
- Design and planning for well integrity
- Design and preparation of the necessary workover programs
- Technical supervision during operation
- Coordination and sourcing of downhole equipment



### Wireline Services

- Production Logging (PLT)
- Downhole pressure & temperature measurements
- Downhole HD video camera (VMT)
- Gamma ray and casing collar locator (GR-CCL)
- North seeking Gyro
- Cement bond logging (CBL)



### Slickline Services

- Hydraulic pull / punch winch
- Variety of downhole tools for tubing sizes from 2 3/8" to 7"
- Setting and retrieving of subsurface equipment (bottom hole choke, gauges, isolation sleeves,...)
- Run in hole mechanical firing heads for TCPs
- Opening / closing of sliding side doors (SSDs)



### Additional Services

- Execution and supervision of open hole- and cased hole well tests
- Operations supervision (Coiled Tubing, Testing,...)
- Liquid level measurements (casing & tubing)
- Corrosion and integrity measurements



# Well Engineering & Project Management

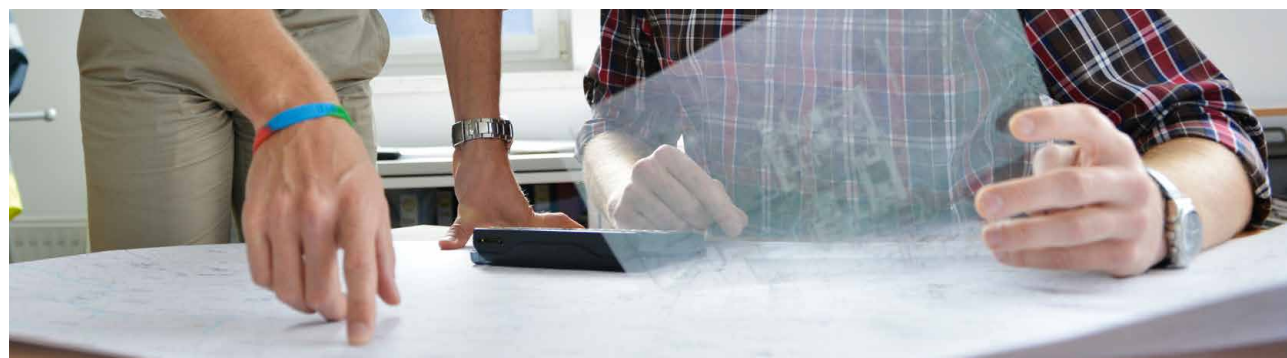
**In the last ten years, we have submitted, planned and implemented over 200 drilling projects.**

RED Well Engineering has unique capabilities to offer individual project elements (e.g. directional drilling planning, casing design) as well as (EPC contractor) turnkey drilling projects. New technologies, including the software we use, and our Well Engineering Team's operational experience are instrumental to continuous improvements in our quality, safety and environmental standards.

Regular contact with the approval authorities, as well as supervising institutions, and close partnerships

with contractors and service companies help us to implement your projects efficiently and on schedule.

The highly trained RED Well Engineering Team is made up of experienced and committed drilling, completion engineers, and geologists. They oversee, coordinate and execute project management for drilling projects in close consultation with the client, from beginning (e.g. finding a suitable surface location for the drilling pad) to end (e.g. completion installation and handover).



## Services

- Integrated project management
- Geological planning and preparation
- Selection of a suitable drilling location
- Preparation of tendering documentation
- Rough planning and cost estimates
- Preparation and submission of application documentation
- Scenario planning for consideration
- Drilling rig selection
- Rig site planning
- Coordination of authorities and stakeholders
- Detailed engineering
- Identifying and commissioning service providers
- On-site supervision of drilling operations
- Technical assessments and reports
- Drafting, monitoring and optimization of work programs
- Cost control
- Technical supervision and execution documentation
- Daily reports and analysis
- Final reports and documentation

# Surface Engineering

**Turnkey solutions, modules and installation of components: RED is an all-in-one provider for production sites and energy installations.**

For new construction and modernization projects, our clients want a reliable, expert partner who will support them during every step of the way until all project objectives have been met. This is how RED has developed over recent decades to become a general contractor for entire projects.

In the last ten years, we have engineered, built and commissioned over 130 drilling sites, 30 test installations

(production, storage and geothermal), 100 surface facilities for wells, 130 pipeline projects and 30 production and storage stations.

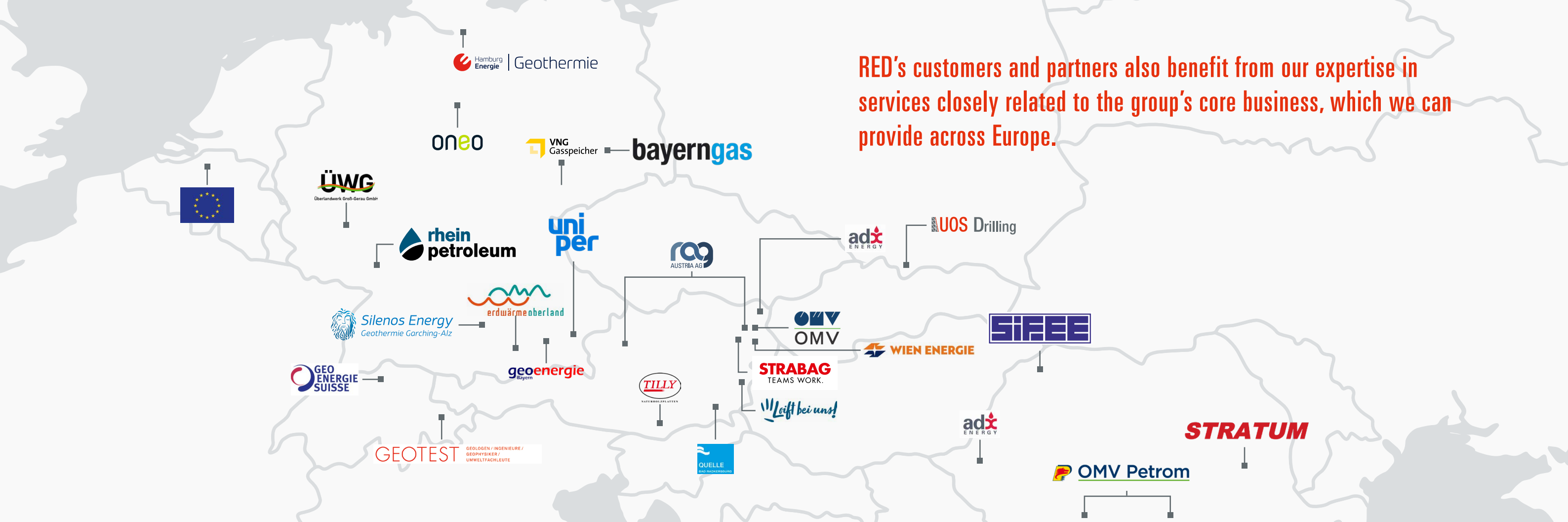
Our Surface Engineering Team is made up of seasoned plant engineers, electrical engineers and measurement and control engineers. Experienced project managers coordinate construction on site.

## Services

- Design and construction of gas-fired and combined heat and power plants
- Design and construction of test and industrial facilities (oil, gas, geothermal)
- Site surveys
- Tendering and contract award procedures
- Rough and detailed engineering
- Coordination with public authorities
- Drilling site construction incl. construction coordinator
- Equipment coordination and procurement
- Technical project supervision and quality assurance
- Time schedule and cost estimates
- Facility acceptance, commissioning and documentation
- Automation technology
- Instrumentation and control engineering
- Geothermal applications
- Pipeline and infrastructure construction
- Control and optimization of turbines and compressors
- Process engineering
- Installation abandonment
- Pipeline renovation and pipeline infrastructure abandonment
- Re-establishment of drilling sites and wells



RED's customers and partners also benefit from our expertise in services closely related to the group's core business, which we can provide across Europe.



## Selected reference projects

### ADX Energy Panonia SRL

Engineering support for selecting drilling rigs, Rig audit

### ADX VIE GmbH

Workover services, Well engineering support

### Bad Radkersburg Beteiligungsgesellschaft m.b.H.

Well services, Integrity testing

### Bayerngas GmbH

Rig contractor for gas exploration wells, planning and equipment supply for gas testing, Engineering support

### Erdwärme Oberland GmbH

Rig supervision, Equipment supply

### EU-Project ThermoDrill

Development of a new drilling process for granite

### Geoenergie Bayern Projekt Törring GmbH & Co KG

Planning of well site

### Geo-Energy Suisse AG

Engineering support, Support in tendering process, rig audit

### Geotest AG

Engineering support for borehole dimensioning and well site construction

### Hamburger Energiewerke GmbH

Rig contractor for a geothermal project, provision of a geothermal test facility

### OMV Austria Exploration & Production GmbH

Rig contractor for a drilling and workover campaign in Lower Austria, Well engineering support, Well services

### OMV Petrom SA

Rig contractor for a drilling campaign (3 wells) in Romania

### ONEO GmbH & Co KG

Rig contractor for drilling and workover campaigns in Germany, Well engineering and surface engineering support, Rig supervision, Well site planning and coordination, Planning of production facility

### RAG Austria AG / RAG E&P GmbH

Rig contractor for drilling campaign, Workover services, Well engineering, Rig supervision, Well site planning, Planning of production facility

### Rhein Petroleum GmbH

Rig supervision / Engineering support

### Sifee Gaia Energy SRL

Engineering Support

### Silenos Energy GmbH

Rig contractor for geothermal wells, Well engineering and surface engineering support, Well site planning, Workover / ESP services

### STRABAG AG

Due Diligence

### Stratum Energy Romania LLC

Rig contractor for drilling and workover campaign, Planning of completion design, Planning and building an oil test equipment

### Thermalquelle Loipersdorf Gesellschaft m.b.H. & Co KG

General contractor for a geothermal project (from planning and submission, through operational implementation and test work, to pipeline construction)

### Tilly Energy Cooperation GmbH

Well engineering, Rig supervision, Well site planning, Drafting of operating program and submission documents, Planning of completion design

### Überlandwerk Groß-Gerau GmbH

Rig supervision / Engineering support

### UOS Drilling SA

Rig contractor for a geothermal well

### Uniper Energy Storage GmbH

Slickline services, Support and supervision of production facility, Planning of plug and abandonment (subsurface and surface)

### VNG Gasspeicher GmbH

Well & surface engineering support for well abandonment campaign including rig site and subsurface planning, authority applications, tender documents

### Wien Energie GmbH

Redrilling and recompletion of a partially plugged well, including the coordination of perforation and testing services



## UOS: overview

UOS Drilling S.A. provides services related to the exploration and development of natural gas and oil deposits, as well as research wells, geothermal wells, salt deposit boreholes for oil and fuel storage, and large diameter drainage wells.



## Drilling rigs available in the UOS group

Type of rig	Year of production	Parameters and description	quantity
NOV CE-ATEX 2000 HP AC PAD	2013	Hook lifting capacity: 454 to Mast height: 56 m Hoisting power: 2.000 PS Top Drive: TDS 11-SA NOV, Torque: 51.000 Nm Innovative Steel Toe™System (Rig Walking System)	1
BENTEC EURO RIG (E200, E202)	2008/2009	Hook lifting capacity: 300 to Mast height: 40,2 m Hoisting power: 1.250 PS Top Drive: MHWIRTH PTD 500, Torque: 41.000 Nm	2
TD 200 CA-A7	2014	Hook lifting capacity: 200 to Mast height: 39 m Hoisting power: 1.200 PS Top Drive: 250 T EMI 400, Torque: 28.500 Nm	1
TD 160 CA-A7	2014, 2013, 2009, 2007	Hook lifting capacity: 160 to Mast height: 37,10 m Hoisting power: 1.000 PS Top Drive: 250 T EMI 400, Torque: 28.500 Nm	4
TD 125 CA-A6	2014	Hook lifting capacity: 125 to Mast height: 35,20 m Hoisting power: 540 PS Rotary Table	1
BAUER BBA-90	2004	Hook lifting capacity: 90 to Mast height: 18,40 m Drive: 730 PS Volvo diesel engine Hydraulic drive head, Torque: 26.000 Nm	1
PRAKLA RB-50	2014	Hook lifting capacity: 50 to Mast height: 16,40 m Hydraulic drive head, Torque: 31.000 Nm	1
WIRTH 3AU	1981	Hook lifting capacity: 40 to Mast height: 18,30 m Hydraulic drive head, Torque: 5.400 Nm	1

**Credits** Published by: RED Drilling & Services GmbH , Schwarzmoos 28, 4851 Gampern  
 Pictures: picture library RED Drilling & Services GmbH, picture library RAG Austria AG, steve.haider.com  
 May 2022



Schwarzmoos 28 · 4851 Gampern  
[www.red-drilling-services.at](http://www.red-drilling-services.at) [office@red-drilling-services.at](mailto:office@red-drilling-services.at)